

Mozambique



GOLD MANICA



Situated in the central part of Mozambique, Manica has a rich history of gold production. The region, part of the Odzi-Mutare-Manica Greenstone Belt, is known for hosting significant gold deposits with a long history which dates back to the pre-colonial era.

The region's gold resources were known and utilized by indigenous peoples before the arrival of European settlers. However, the formalization and intensification of mining activities in Manica can be traced back to the Portuguese colonial period.

RGI together with its local partners, Gem Resources Lda, are currently focused on developing alluvial mining operations close to the town of Manica.

These concessions are strategically located adjacent to major gold-producing operations along the Revue River. Historic mining, both artisanal and “semi-industrial”, have yielded positive results. To further develop and understand the orebody, RGI will commence resource drilling of these assets using its very own RF-400 reverse circulation drill rig. Drill results and geological modelling will be used as an input to advise on mine planning and scheduling.

Trail mining is initially planned start-up with a 40 ton/ hour alluvial processing plant with plans in place to up scale to 150-200 tons/ hour in the near future.

In addition to the alluvial gold project, RGI and Gem Resources Lda are evaluating hard rock gold targets within the region with plans in place to undertake the 1st phase of drilling during H2 of 2024.

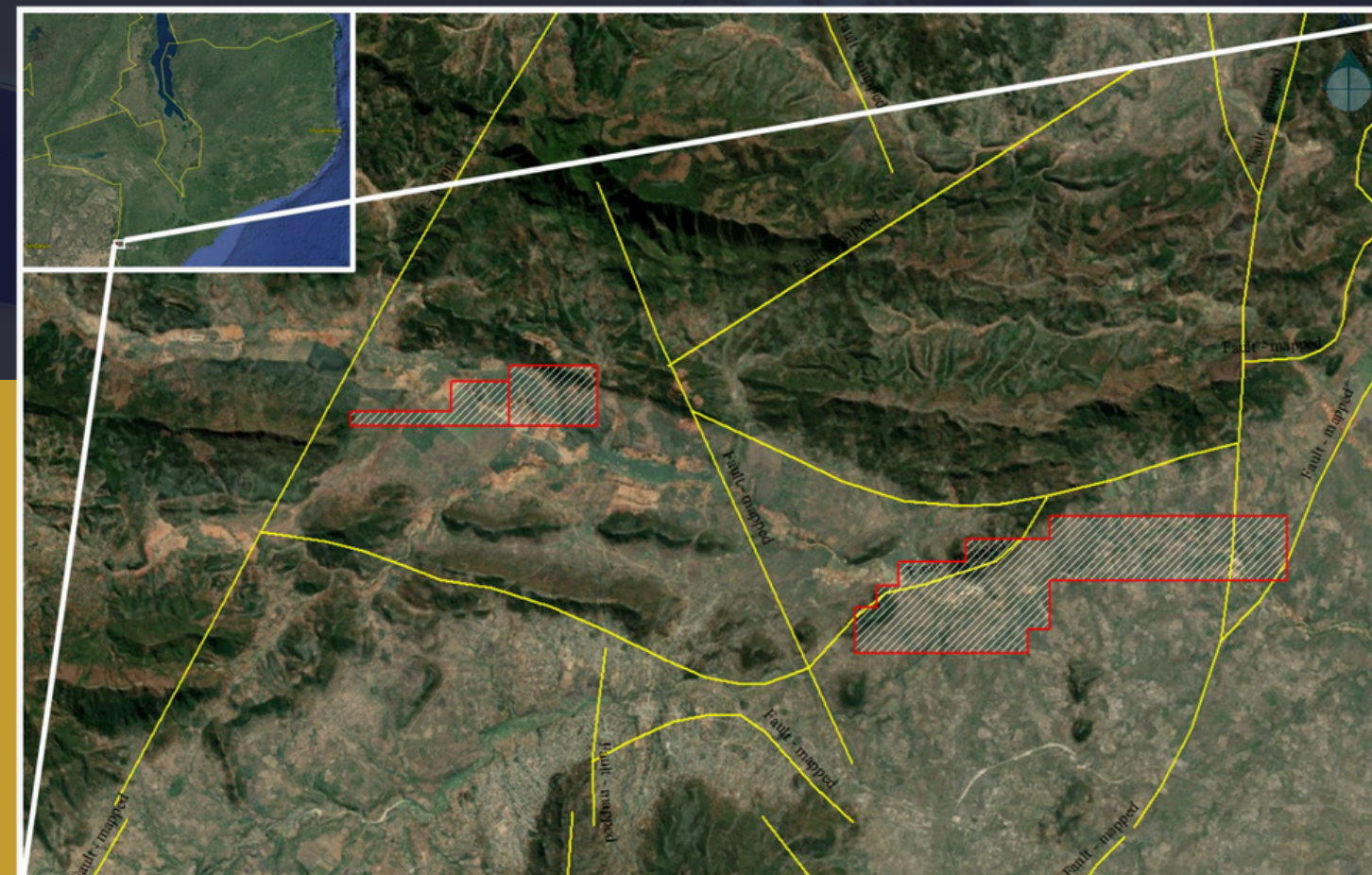
GOLD MANICA

Bounded by regional faults and the Odzi-Mutare-Manica Greenstone belt, the Revue River host some of the best alluvial gold opportunities in Mozambique.

With the Pre-feasibility studies completed, and with current feasibility studies underway, RGI will commence resource drilling of the assets using its very own RF-400 reverse circulation drill rig during H1-2024.

The resource drilling results and geological modeling will be used to inform the team of mine planning requirements and production scheduling.

All indications are that the Manica-1 Project will bear positive returns for all stakeholders.



LITHIUM ZAMBEZIA

RGI, as duly appointed by Impuma Group, together with its local partners, 3Di Mineral Lda, are set to develop two greenfields lithium assets in the Province of Zambezia. These assets, located close to the towns of Alto Ligonha and Mocuba, in central Mozambique.

Phase-1 of drill is set to commence during H2-2024.

